

Grinding Unit RT02

Grinding cutter, **LOW-NOISE**, 45° tips inclination

Characteristics:

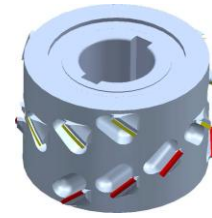
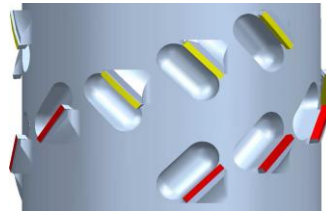
Finishing cutters for single shoulder edge banding machine

Design:

LOW-NOISE: significant noise reduction during the working process
45° brazed-welded pushing tips with axial inclination for a high-quality finishing cut

RPM: 9.000/12.000

Materials: chipboard, melamine, honeycomb wood, veneered panels, MDF



Wirutex Code	Biesse code	Description
S13165	CSEN350085	PCD CUTTER D.80X49X30+2KW Z=3+3 SYMM.45° LOW-NOISE
S13164	CSEN350086	PCD CUTTER D.80X65X30+2KW Z=3+3 SYMM.45° LOW-NOISE
S13076		PCD CUTTER D.80X49X30+2KW Z=2+2 SYMM. 45° LOW-NOISE
S12805		PCD CUTTER D. 80X65X30+2KW Z=2+2 SYMM. 45° LOW-NOISE

End Cutting Unit IT03

End cutting unit with straight tooth for Akron 1300

Characteristics:

End cutting of glued edges

Design:

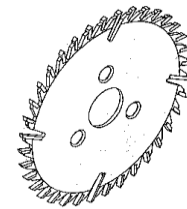
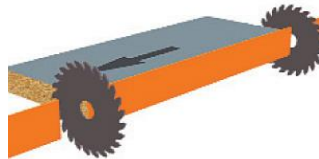
Flat tooth + smoothings

RPM:

12.000

Materials:

Solid wood edges, supported edges, plastic edges



Wirutex Code	Biesse Code	Description
D03150	3401A0335	HM SAW BLADE D.150X3.6X30+3 Z=32+4 STRAIGHT TOOTH

Overlapped Trimmer Unit RS02

Overlapped trimmer with **HM** interchangeable knives

Characteristics:

For edge trimming.

Design:

With interchangeable HM knives.

RPM:

18.000

Materials:

Solid wood edges, supported edges, plastic edges.



Wirutex Code	Biesse Code	Description
D03219	3401A0357	HM CUTTER WITH INTERCHAGEABLE KNIVES D.70X12X16+2KW Z=3
C00405	N3402N0120	HM KNIVES 12X12X1,5

Tilted Trimmer RF02

Trimmer for tilted engines with HM interchangeable knives

Characteristics:

For edge trimming on tilted engines.

Design:

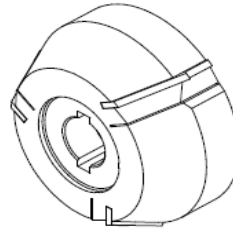
With HM interchangeable knives for chamfers and radiuses R1 - R1,5 - R2 - R3
1 radius each cutter

RPM:

18.000

Materials:

Solid wood edges, supported edges, plastic edges



Wirutex Code	Biesse Code	Description
D03647	CSEN350013	HM CUTTER WITH KNIVES D.72X30X16+2KW 25° Z=3 CW.
D03648	CSEN700013	HM KNIFE 25°
D03649	CSEN350014	HM CUTTER WITH KNIVES D.72X30X16+2KW 25° Z=3 CCW.
D03650	CSEN700014	HM KNIFE 25°
D03651	CSEN350015	HM CUTTER WITH KNIVES D.72X30X16+2KW R=1 Z=3 CW.
D03652	CSEN700015	HM KNIFE R=1
D03653	CSEN350016	HM CUTTER WITH KNIVES D.72X30X16+2KW R=1 Z=3 CCW.
D03654	CSEN700016	HM KNIFE R=1
D03655	CSEN350017	HM CUTTER WITH KNIVES D.72X30X16+2KW R=1.5 Z=3 CW.
D03656	CSEN700017	HM KNIFE R=1.5
D03657	CSEN350018	HM CUTTER WITH KNIVES D.72X30X16+2KW R=1.5 Z=3 CCW.
D03658	CSEN700018	HM KNIFE R=1.5
D03659	CSEN350019	HM CUTTER WITH KNIVES D.72X30X16+2KW R=2 Z=3 CW.
D03660	CSEN700019	HM KNIFE R=2
D03661	CSEN350020	HM CUTTER WITH KNIVES D.72X30X16+2KW R=2 Z=3 CCW.
D03662	CSEN700020	HM KNIFE R=2
D03663	CSEN350021	HM CUTTER WITH KNIVES D.72X30X16+2KW R=3 Z=3 CW.
D03664	CSEN700021	HM KNIFE R=3
D03665	CSEN350022	HM CUTTER WITH KNIVES D.72X30X16+2KW R=3 Z=3 CCW.
D03666	CSEN700022	HM KNIFE R=3

Multiprofile Tilted Trimmer RF02

Trimmer for tilted engines with HM multiprofile interchangeable knives

Characteristics:

For edge trimming on tilted engines.

Design:

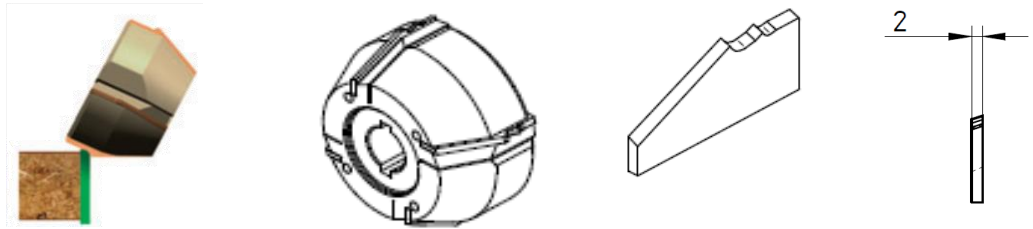
With HM interchangeable knives for chamfers and radiuses R1 - R1,5 - R2 - R3
2 radiuses each cutter

RPM:

18.000

Materials:

Solid wood edges, supported edges, plastic edges



Wirutex Code	Biesse Code	Description
D03667	CSEN350023	HM CUTTER WITH KNIVES D.72X35X16+2KW R=1/1.5 Z=4 CW.
D03668	CSEN700023	HM KNIFE R=1/1.5/25°
D03669	CSEN350024	HM CUTTER WITH KNIVES D.72X35X16+2KW R=1/1.5 Z=4 CCW.
D03670	CSEN700024	HM KNIFE R=1/1.5/25°
D03671	CSEN350025	HM CUTTER WITH KNIVES D.72X35X16+2KW R=1/2 Z=4 CW.
D03672	CSEN700025	HM KNIFE R=1/2/25°
D03673	CSEN350026	HM CUTTER WITH KNIVES D.72X35X16+2KW R=1/2 Z=4 CCW.
D03674	CSEN700026	HM KNIFE R=1/2/25°
D03675	CSEN350027	HM CUTTER WITH KNIVES D.72X35X16+2KW R=1.5/2 Z=4 CW.
D03676	CSEN700027	HM KNIFE R=1.5/2/25°
D03677	CSEN350028	HM CUTTER WITH KNIVES D.72X35X16+2KW R=1.5/2 Z=4 CCW.
D03678	CSEN700028	HM KNIFE R=1.5/2/25°
D03679	CSEN350029	HM CUTTER WITH KNIVES D.72X35X16+2KW R=1.5/3 Z=4 CW.
D03680	CSEN700029	HM KNIFE R=1.5/3/25°
D03681	CSEN350030	HM CUTTER WITH KNIVES D.72X35X16+2KW R=1.5/3 Z=4 CCW.
D03682	CSEN700030	HM KNIFE R=1.5/3/25°
D03683	CSEN350031	HM CUTTER WITH KNIVES D.72X35X16+2KW R=2/3 Z=4 CW.
D03684	CSEN700031	HM KNIFE R=2/3/25°
D03685	CSEN350032	HM CUTTER WITH KNIVES D.72X35X16+2KW R=2/3 Z=4 CCW.
D03686	CSEN700032	HM KNIFE R=2/3/25°

Rounding Unit AR02

Rounding cutter with HM interchangeable knives

Characteristics:

For edge spoking

Design:

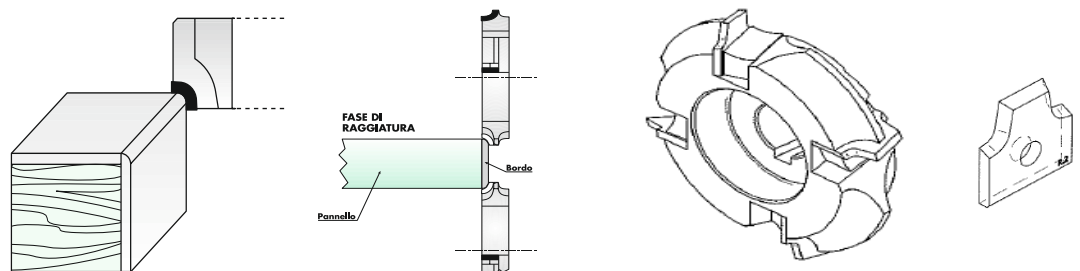
With HM exchangeable knives for chamfers and radiuses R1 - R1,5 - R2 - R3
1 radius each cutter

RPM:

18.000

Materials:

Solid wood edges, supported edges, plastic edges



Wirutex Code	Biesse Code	Description
D03252	3401A0353	HM CUTTER WITH KNIVES D.70X20X16+2KW R=1.5 Z=4 20° CW.
D03253	3401A0354	HM CUTTER WITH KNIVES D.70X20X16+2KW R=1.5 Z=4 20° CCW.
D03254	3402A0086	HM KNIFE 16X16.5X2 R=1.5
D03255	3401A0355	HM CUTTER WITH KNIVES D.70X20X16+2KW R=1 Z=4 20° CW.
D03256	3401A0356	HM CUTTER WITH KNIVES D.70X20X16+2KW R=1 Z=4 20° CCW.
D03257	3402A0087	HM KNIFE 16X16.5X2 R=1
D03246	3401A0349	HM CUTTER WITH KNIVES D.70X20X16+2KW R=2 Z=4 20° CW.
D03247	3401A0350	HM CUTTER WITH KNIVES D.70X20X16+2KW R=2 Z=4 20° CCW.
D03248	3402A0084	HM KNIFE 16X16.5X2 R=2
D03249	3401A0351	HM CUTTER WITH KNIVES D.70X20X16+2KW R=3 Z=4 20° CW.
D03250	3401A0352	HM CUTTER WITH KNIVES D.70X20X16+2KW R=3 Z=4 20° CCW.
D03251	3402A0085	HM KNIFE 16X16.5X2 R=3

Rounding Unit AR02

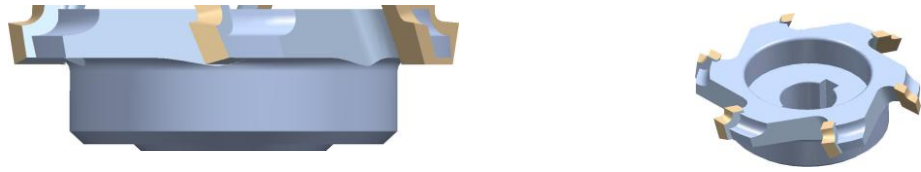
Rounding cutter with **HM brazed-welded tips**

Characteristics:
For edge spoking

Design:
With HM brazed-welded tips for chamfers and radiuses R1 - R1,5 - R2 - R3
1 radius each cutter

RPM:
18.000

Materials:
Solid wood edges, supported edges,
plastic edges



Wirutex Code	Codice Biesse	Description
D01578	N3401N0112	HM BRAZED-WELDED CUTTER D.60/68 B=16+2KW R=1 Z=6 CW.
D01579	N3401N0113	HM BRAZED-WELDED CUTTER D.60/68 B=16+2KW R=1 Z=6 CCW.
D01529	N3401N0107	HM BRAZED-WELDED CUTTER D.60/68 B=16+2KW R=1,5 Z=6 CW.
D01580	N3401N0108	HM BRAZED-WELDED CUTTER D.60/68 B=16+2KW R=1,5 Z=6 CCW.
D01482	N3401N0105	HM BRAZED-WELDED CUTTER D.60/68 B=16+2KW R=2 Z=6 CW.
D01483	N3401N0106	HM BRAZED-WELDED CUTTER D.60/68 B=16+2KW R=2 Z=6 CCW.
D01527	N3401N0103	HM BRAZED-WELDED CUTTER D.60/68 B=16+2KW R=3 Z=6 CW.
D01528	N3401N0104	HM BRAZED-WELDED CUTTER D.60/68 B=16+2KW R=3 Z=6 CCW.
D01522	N3401N0101	HM BRAZED-WELDED CUTTER D.60X9X16+2KW 25° Z=6 CW.
D01523	N3401N0102	HM BRAZED-WELDED CUTTER D.60X9X16+2KW 25° Z=6 CCW.

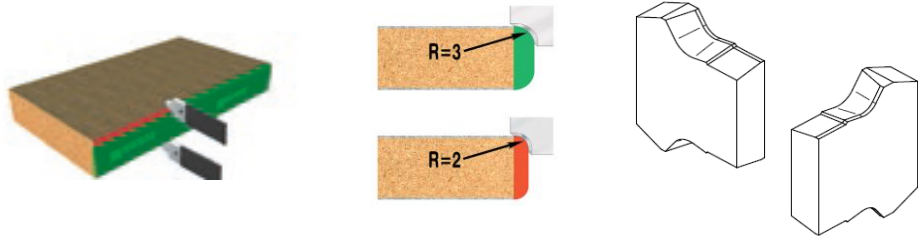
Edge Scraper RB02

HM ANTI-BLEACHING edge scraper insert

Characteristics:
For edge finishing

Design:
HM solid rounding insert, with ANTI-BLEACHING profile

Materials:
Solid wood edges, supported edges,
plastic edges



Wirutex Code	Biesse Code	Description
D03413	3402A0083	RB INSERT 13.5X11X3 25° ANTI-BLEACHING
D03607	3402A0124	RB INSERT R=1.0 ANTI-BLEACHING
D03608	3402A0125	RB INSERT R=1.5 ANTI-BLEACHING
D03609	3402A0126	RB INSERT R=2.0 ANTI-BLEACHING
D03222	3402A0082	HM BRAZED-WELDED CUTTER D.60X9X16+2KW 25° Z=6 CW.

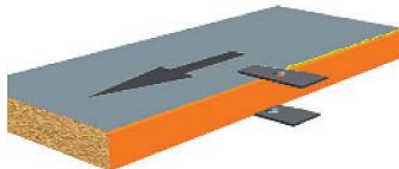
Glue Scraper RC02

HM Glue scraper insert

Characteristics:
To remove residual glue after edge bonding process

Design:
Triangular insert with 3 cutting edges

Materials:
Solid wood edges, supported edges,
plastic edges



Wirutex Code	Biesse Code	Description
C00626	E3401E0117	TRIANGULAR INSERT 22,86X2,5 Z=3